

THE SINGO



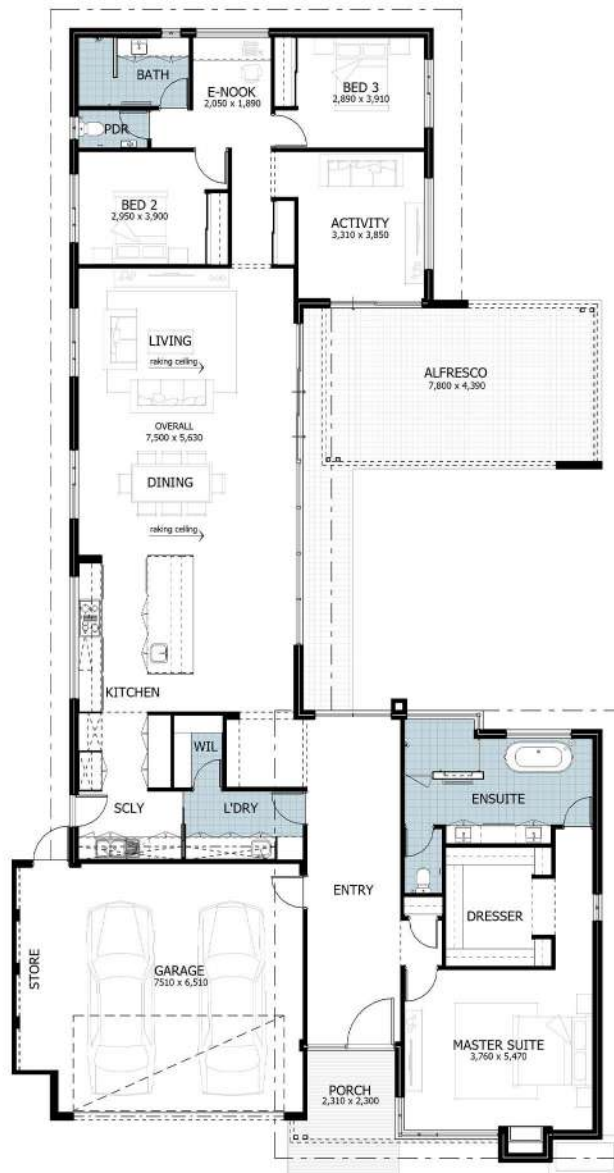
ABOUT THIS LUXURY BUILD

- The exterior features stone cladding, steel beams, and a high skillion roof for a striking appearance.
- The master suite boasts a fireplace and a luxurious ensuite with a freestanding bathtub.
- Open-plan living is enhanced with natural light, raking ceilings, and easy access to the alfresco area.
- Large stacker doors ensure a seamless flow between indoor and outdoor spaces.
- The functional kitchen includes a scullery and direct access to the laundry area.
- Energy efficiency is prioritized with double glazing and eco-friendly material options.



4 2 2 330.97m²

PROPERTY LAYOUT



A WALK-THROUGH OF THIS HOME

Discover The Singo's coastal charm with its stone-clad front, exposed steel beams, and high skillion roof. Through a large aluminium glazed door, the entrance reveals views of the alfresco and backyard. The open-plan living/dining area has raking ceilings and 8.4m of glazing with stacker doors, which blends indoor and outdoor spaces. The front-wing master bedroom features a large dresser, ensuite with freestanding bath, walkthrough shower, separate toilet, and cosy fireplace.

SOME OF THE CUSTOMISABLE FEATURES

FLOORING CHOICES

Including polished concrete, ceramic tiles, carpet, vinyl planks, hybrid flooring, or timber.

KITCHEN/ BATHROOM

Stone tops throughout the home and full-height tiling in bathrooms.

OUTDOOR CUSTOMISATION

Choices of paving, exposed aggregate, or hardwood decking options for alfresco and porch.

ADVANCED FEATURES

Smart wiring and security cameras for modern security.

FIREPLACE SELECTION

Gas, electric, or wood options.

INTERIOR FINISHES

Diverse cabinetry, door styles, and lighting for personalisation.

PROPERTY FEATURES

Experience the allure of raking ceilings that add a dramatic flair to the living areas, complemented by expansive glazing that offers unobstructed views to the alfresco, ensuring a seamless connection with the outdoors. The large, meticulously crafted kitchen, complete with waterfall ends, invites culinary exploration and becomes the heart of the home.



Imagine a space where the beauty of indoor living meets the tranquility of outdoor relaxation. A possible pool, visible from the comfort of your home, allows you to watch over your kids while they play, framed by a striking raking ceiling that enhances the sense of openness.

OUR FULL RANGE OF CUSTOM HOME DESIGNS



THE FALCON

4 bedrooms, 2 bathrooms, 2 cars, 312.83m²

LEARN MORE



THE PARKRIDGE

4 bedrooms, 2 bathrooms, 2 cars, 320.99m²

LEARN MORE



THE BAY

4 bedrooms, 2 bathrooms, 2 cars, 319.57m²

LEARN MORE



THE PRESTON

4 bedrooms, 2 bathrooms, 2 cars, 361.27m²

LEARN MORE

SEE MORE OF OUR HOME DESIGNS

ABOUT OUR TEAM & PAST PROJECTS

TOUR THROUGH OUR PAST BUILD MUNDIJONG FARMHOUSE



CHECK CHECK OUR SIMILAR BUILDS



SHELLY



HALLS HEAD



ATTADALE

[SEE OUR COMPLETED PROJECTS](#)

ABOUT OUR TEAM

At D.A. Burke, we are a boutique, award-winning custom home builder in the Mandurah and Peel Region. Starting over 40 years ago, we are a third-generation family business and have built a reputation for our unique designs - no two homes are alike.



MATTHEW BURKE

Director / Construction Manager

"Matthew, a qualified Carpenter and registered Building Practitioner with 19 years in construction, oversees all projects at D.A. Burke Builders, ensuring quality and service."



DARYN BURKE

Director / Senior Estimator

"Daryn, with 22 years in construction and a Cert IV in Building/Estimating, is a Senior Estimator at D.A. Burke, serving as the main client contact."