

## THE PRESTON



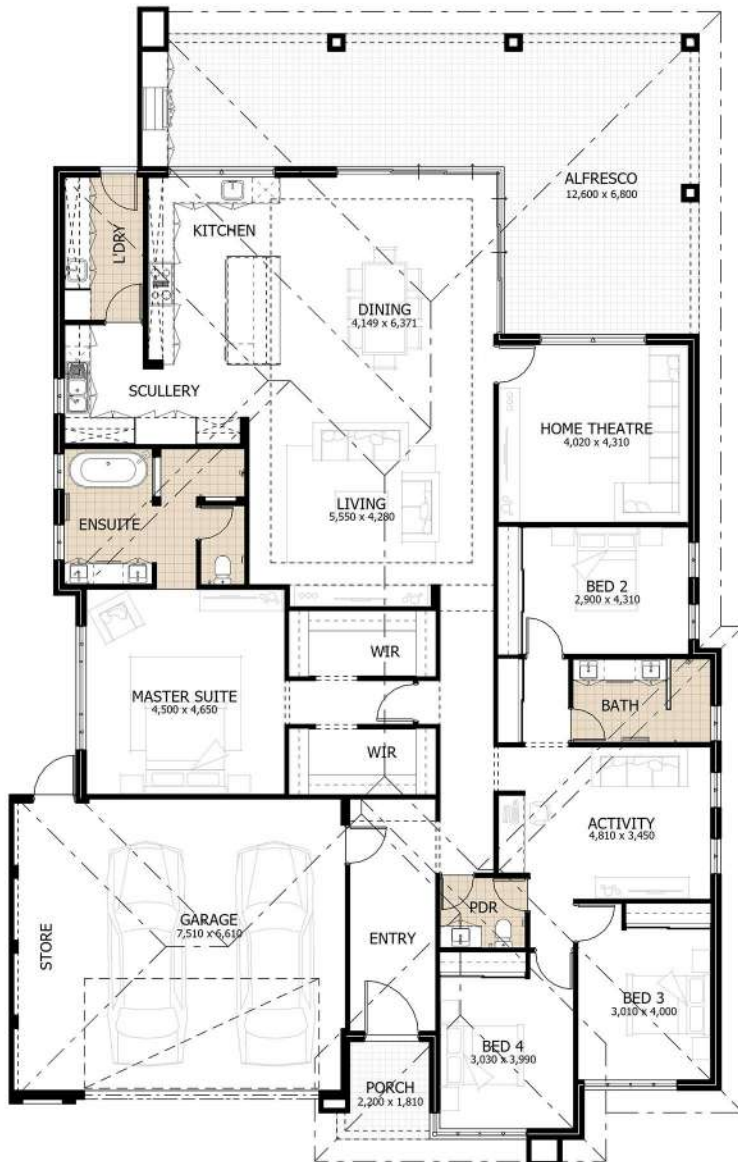
### ABOUT THIS LUXURY BUILD

- Spacious Master Bedroom: Luxurious ensuite with a standalone bath and his/her walk-in robes.
- Home Theatre: Option for a servery window to the alfresco, ideal for a pool or games room.
- Expansive Living and Dining Area: Open plan design with a large kitchen and scullery.
- L-Shaped Alfresco: Built under the main roof, perfect for outdoor entertaining.
- Outdoor Kitchen: Enhances the alfresco area, great for family gatherings.
- Servery Windows: Easy access from the kitchen to the theatre room or games room.



 4
  2
  2
  361.27m<sup>2</sup>

## PROPERTY LAYOUT



## A WALK-THROUGH OF THIS HOME

The Preston, ideal for an 18m frontage, blends traditional style with modern luxury. It features minor bedrooms with built-in robes, a central activity room, and a master suite with walk-in robes and a lavish ensuite. The open-plan living and dining area, including a large kitchen and scullery, leads to an L-shaped alfresco. A versatile home theatre room offers optional servery windows to the alfresco, and a practical laundry is located off the scullery.

## SOME OF THE CUSTOMISABLE FEATURES

### FLOOR COVERINGS

Options include polished concrete, ceramic tiles, carpet, vinyl planks, hybrid flooring, and timber flooring.

### STONE TOPS

A variety of stone top options throughout the home for a personalised touch.

### CABINERY SELECTIONS & DESIGN

Customise your cabinetry with a range of designs and finishes.

### FEATURE CLADDING

Choose from composite wood look, cement sheeting, or stone cladding for a unique exterior.

### INTERNAL DOOR STYLE SELECTION

A variety of door styles to complement your home's interior design.

### OUTDOOR KITCHEN OPTIONS

Tailor your alfresco area with an outdoor kitchen for enhanced outdoor living.

## PROPERTY FEATURES

Elevate your outdoor entertainment with a large corner stacking door that open to a spacious alfresco area. The feature island bench and servery window enhance the functionality and aesthetic of this outdoor haven.



Every design element, from the servery window to the custom full-height cabinetry, has been thoughtfully incorporated to create environments that celebrate the joy of living. Welcome to a home where every detail is curated for your utmost comfort and satisfaction.

## OUR FULL RANGE OF CUSTOM HOME DESIGNS



THE SINGO

 4
  2
  2
  330.97m<sup>2</sup>

[LEARN MORE](#)



THE PARKRIDGE

 4
  2
  2
  320.99m<sup>2</sup>

[LEARN MORE](#)



THE BAY

 4
  2
  2
  319.57m<sup>2</sup>

[LEARN MORE](#)



THE FALCON

 4
  2
  2
  312.83m<sup>2</sup>

[LEARN MORE](#)

[SEE MORE OF OUR HOME DESIGNS](#)

## ABOUT OUR TEAM & PAST PROJECTS

### TOUR THROUGH OUR PAST BUILD MUNDIJONG FARMHOUSE



### CHECK CHECK OUR SIMILAR BUILDS



SHELLY



HALLS HEAD



ATTADALE

[SEE OUR COMPLETED PROJECTS](#)

## ABOUT OUR TEAM

At D.A. Burke, we are a boutique, award-winning custom home builder in the Mandurah and Peel Region. Starting over 40 years ago, we are a third-generation family business and have built a reputation for our unique designs - no two homes are alike.



### MATTHEW BURKE

Director / Construction Manager

"Matthew, a qualified Carpenter and registered Building Practitioner with 19 years in construction, oversees all projects at D.A. Burke Builders, ensuring quality and service."



### DARYN BURKE

Director / Senior Estimator

"Daryn, with 22 years in construction and a Cert IV in Building/Estimating, is a Senior Estimator at D.A. Burke, serving as the main client contact."