



D.A. BURKE  
BUILDERS PTY LTD

### ABOUT THIS LUXURY BUILD

- Curved face brick at the entry, offering a unique and contemporary street appeal.
- Spacious home theatre room for immersive entertainment.
- Open-plan living and dining area with a distinct kitchen space, highlighted by a feature bulkhead.
- Expansive stacker doors opening to a private alfresco, ideal for indoor-outdoor living.
- Luxurious master bedroom with a large ensuite, including a walk-in shower and separate toilet.
- Practical and stylish scullery and laundry area, situated conveniently behind the kitchen.



4



2

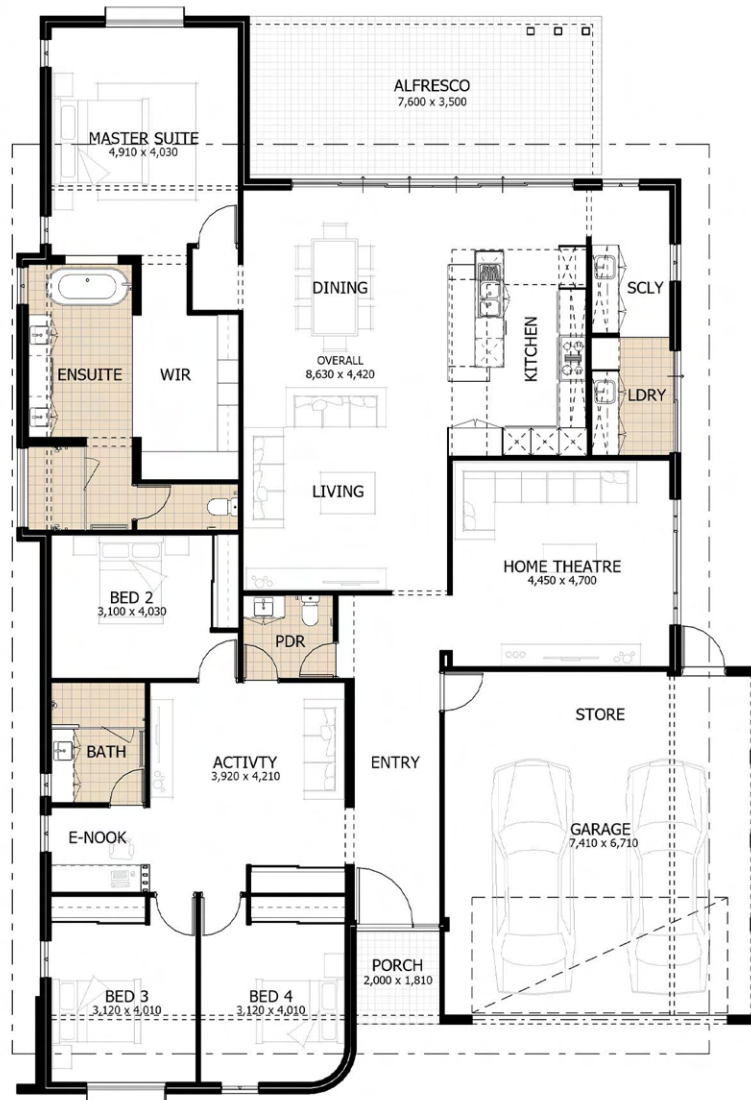


2



319.57m<sup>2</sup>

## PROPERTY LAYOUT



## A WALK-THROUGH OF THIS HOME

The Bay is a modern beach house with a curved face brick entrance and a spacious 1200mm wide glazed door. It features front-placed minor bedrooms, a large activity room, and an E nook. A sizeable home theatre room leads to an open-plan living and dining area, connected to a kitchen with a feature bulkhead. The scullery and laundry are conveniently located behind the kitchen. Expansive stacker doors open to a private alfresco and serene backyard. The rear master suite includes a walk-in robe and luxurious ensuite with a separate toilet and walk-in shower.

## SOME OF THE CUSTOMISABLE FEATURES

### FLOOR COVERINGS

Options range from polished concrete, ceramic tiles, carpet, vinyl planks, hybrid flooring, to timber flooring, allowing customisation of each space.

### STONE TOPS

A variety of stone top options throughout the home to suit your style and decor preferences.

### CABINERY SELECTIONS & DESIGN

Customise the look and functionality of your cabinetry with a range of designs and finishes.

### FEATURE CLADDING

Choices include composite wood look, cement sheeting, or stone cladding, to create a unique exterior aesthetic.

### INTERNAL DOOR STYLE SELECTION

Select from a variety of door styles to complement your home's interior design.

### OUTDOOR KITCHEN OPTIONS

Tailor your alfresco area with an outdoor kitchen, ideal for entertaining and enhancing your outdoor living experience.

## PROPERTY FEATURES

A contemporary style kitchen awaits, highlighted by a feature bulkhead and lighting that sets the mood. The island bench, equipped with a bar stool area and double ovens, is perfect for both casual meals and entertaining guests.



Step into an open-plan living space that seamlessly connects to the alfresco through large stacking doors, blurring the lines between indoor and outdoor living. It's an ideal backdrop for gatherings and peaceful evenings alike.



## OUR FULL RANGE OF CUSTOM HOME DESIGNS



THE FALCON

 4
  2
  2
  312.83m<sup>2</sup>

[LEARN MORE](#)



THE SINGO

 4
  2
  2
  330.97m<sup>2</sup>

[LEARN MORE](#)



THE PARKRIDGE

 4
  2
  2
  320.99m<sup>2</sup>

[LEARN MORE](#)



THE PRESTON

 4
  2
  2
  361.27m<sup>2</sup>

[LEARN MORE](#)

[SEE MORE OF OUR HOME DESIGNS](#)

## ABOUT OUR TEAM & PAST PROJECTS

### TOUR THROUGH OUR PAST BUILD MUNDIJONG FARMHOUSE



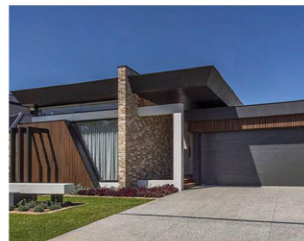
### CHECK CHECK OUR SIMILAR BUILDS



SHELLY



HALLS HEAD



ATTADALE

[SEE OUR COMPLETED PROJECTS](#)

## ABOUT OUR TEAM

At D.A. Burke, we are a boutique, award-winning custom home builder in the Mandurah and Peel Region. Starting over 40 years ago, we are a third-generation family business and have built a reputation for our unique designs - no two homes are alike.



### MATTHEW BURKE

Director / Construction Manager

"Matthew, a qualified Carpenter and registered Building Practitioner with 19 years in construction, oversees all projects at D.A. Burke Builders, ensuring quality and service."



### DARYN BURKE

Director / Senior Estimator

"Daryn, with 22 years in construction and a Cert IV in Building/Estimating, is a Senior Estimator at D.A. Burke, serving as the main client contact."